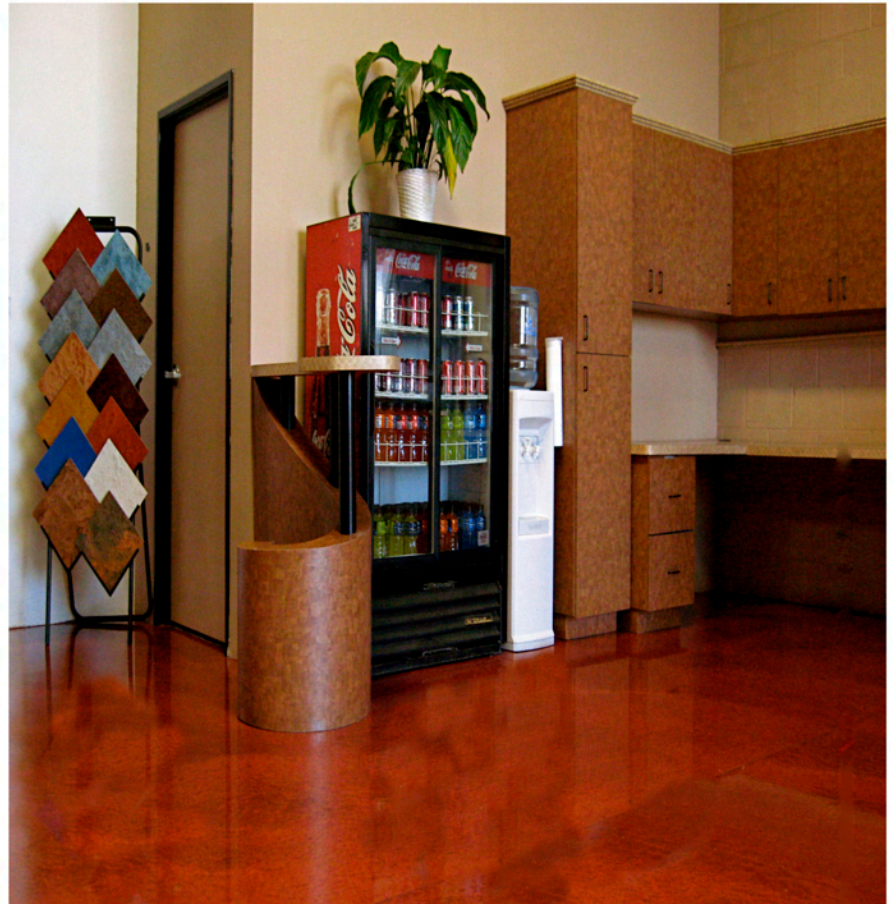


The color selector is designed to assist you in making your selection for Metal Essence Metallic epoxy colors. Cohills® Metal Essence Metallic pigment packs are measured by weight (not volume) and are designed to be added to 100% solids epoxy. 1 pigment pack should be added to 1¼ gallon of an epoxy base. Mix thoroughly for 3 minutes to insure proper dispersion. Cohills® Metal Essence Metallic pigment packs may be used in other clear vehicles such as polyurethane, acrylic sealers and waterborne epoxies, all with different effects. Be sure to thoroughly read all application data on whatever vehicle you are adding the Metal Essence Metallic pigment packs to. Due to reproduction limitations, it is necessary that we reserve the right to allow for reasonable variations of application. Printed colors show approximate color without affect of dispersing techniques, finishing techniques or application procedure. Variation of application will also affect the final appearance. An instructional DVD is available upon request.



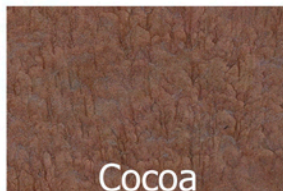
Aluminum



Avocado



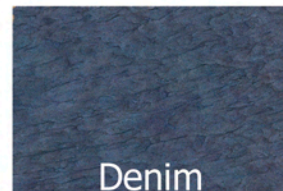
Butterscotch



Cocoa



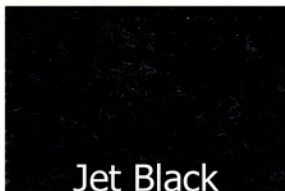
Deep Purple



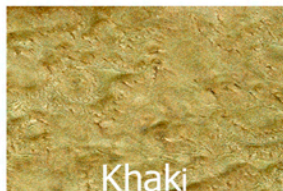
Denim



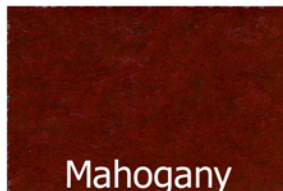
Emerald Green



Jet Black



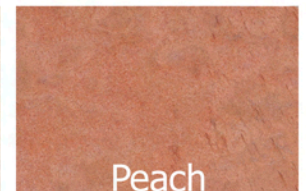
Khaki



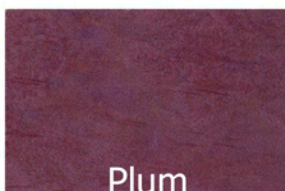
Mahogany



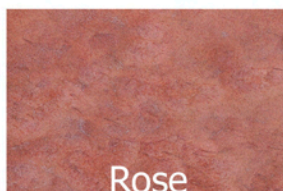
Mother of Pearl



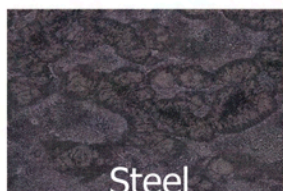
Peach



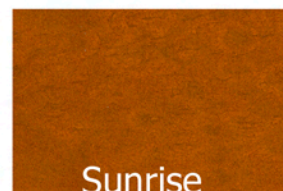
Plum



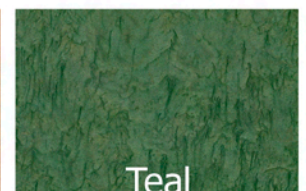
Rose



Steel



Sunrise



Teal



METAL ESSENCE METALLICS



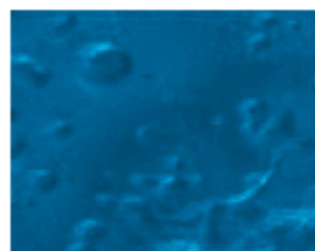
STERLING



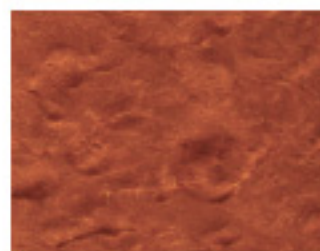
GALAXY BLUE



QUICK SILVER



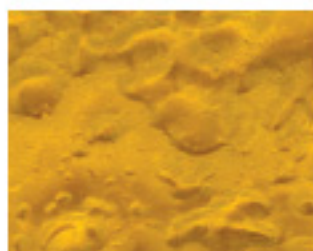
CARIBBEAN BLUE



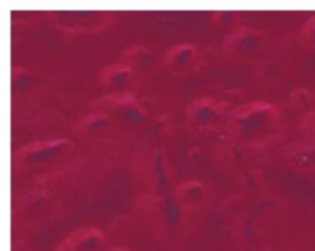
AUTUMN BLAZE



PURPLE HAZE



ARIZONA GOLD



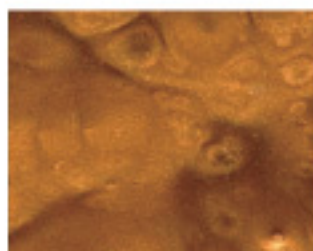
MERLOT



TUSCAN SUN



CAPPUCCINO



COPPER



CHESTNUT



PEARL

Cohills Pro Series® Metal Essence Metallic pigment packs are measured by weight (not volume) and are designed to be added to 100% solids epoxy. 1 pigment pack should be added to 1-1/4 gallon kit of epoxy base. Mix Thoroughly for 3 minutes to insure proper dispersion. Cohills Pro Series® Metal Essence Metallic pigment packs may be used in other clear vehicles such as polyurethane, acrylic sealers and water-borne epoxies all with different effects. Be sure to thoroughly read all application data on Cohills Pro Series® Metal Metallics before application.

NOTE: The color samples are approximate and represent as closely as possible the appearance of the Cohills Pro Series® Metal Essence Metallics.